

New G-6000 Greasable bearing on  
conveyor - conv. update kit  
see alpha book  
12/18

# PARTS CATALOG

## **AG-BAGGER®**

**MODEL:**

**G-680 thru GH-690**



**AG-BAG CORPORATION**

P.O. BOX 418 - ASTORIA, OREGON 97103 U.S.A.  
TELEPHONE (503) 325-2488  
TELEX #151034

DEERE

# MODEL G-680



THE COMPACT, AFFORDABLE  
BAGGER FROM THE SEALED  
FEED STORAGE LEADER



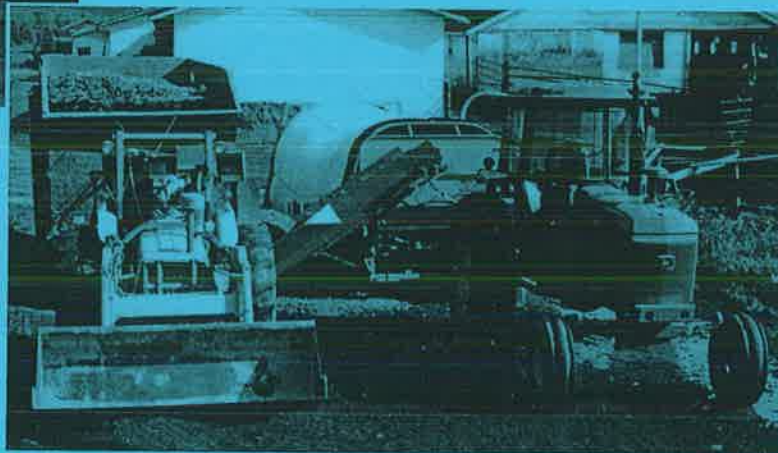
# BAGGER®

## MODEL G-680 BAGGER



### SIMPLICITY AND MOBILITY, YET TOUGH ENOUGH TO DO THE JOB . . .

The G-680 Ag-Bagger is designed for medium size farm operations. It is easy to set up yet will take feed as fast as your forage wagon will deliver!



### ONE OPERATOR OPERATION

The G-680 Bagger is designed to operate in a one-man situation if desired. The tractor powering the unit is automatically advanced as the bag fills with forage. The eight-foot tunnel and bag makes bag changes a breeze.

### SPECIFICATIONS

Model	*(new for 1988)	G-680
Length in Transportation		7'9"
Width in Transport Position		13'
Height in Transport Position		7'2"
Ground Clearance		6"
Maximum Width in Operating Position		12'6"
With Conveyor		17'3"
Power Requirements (540 PTO)		60 HP
*Rotor		6"
Drive Chain		120
Rotor Operating Speed		37 RPM
*Single Wrap Cable Length		150 Ft.
Bag Sizes		8 x 95 8 x 150
Weight		4,470 lbs.

### FEATURES YOU WANT MOST:

**Positive Compaction Control . . .** a must in the bagging process. Hydraulic disc braking allows the operator to adjust to proper pressure for individual crops and moisture conditions. The Bagger's easily read gauge and pump control make it easy.

**Heavy Duty, High Capacity Conveyor . . .** This retractable conveyor will take the feed as fast as your forage wagon will unload it. Easy height control lets you adjust to different wagon levels.

**Single 120 Chain . . .** This 120 chain with chain tighteners keeps a steady flow of power to the compaction rotor.

**AG-BAG BAGS ARE AVAILABLE IN ALL SIZES TO MEET YOUR BUDGET.**

## AG-BAG®

SEALED FEED STORAGE SYSTEMS

OTHER QUALITY MACHINES:

- MIGHTY BITE® LOADING BUCKETS
- AG-BAG® LIVE FLOORS
- AG-BAG® AUGER BLENDERS



AG-BAG CORPORATION

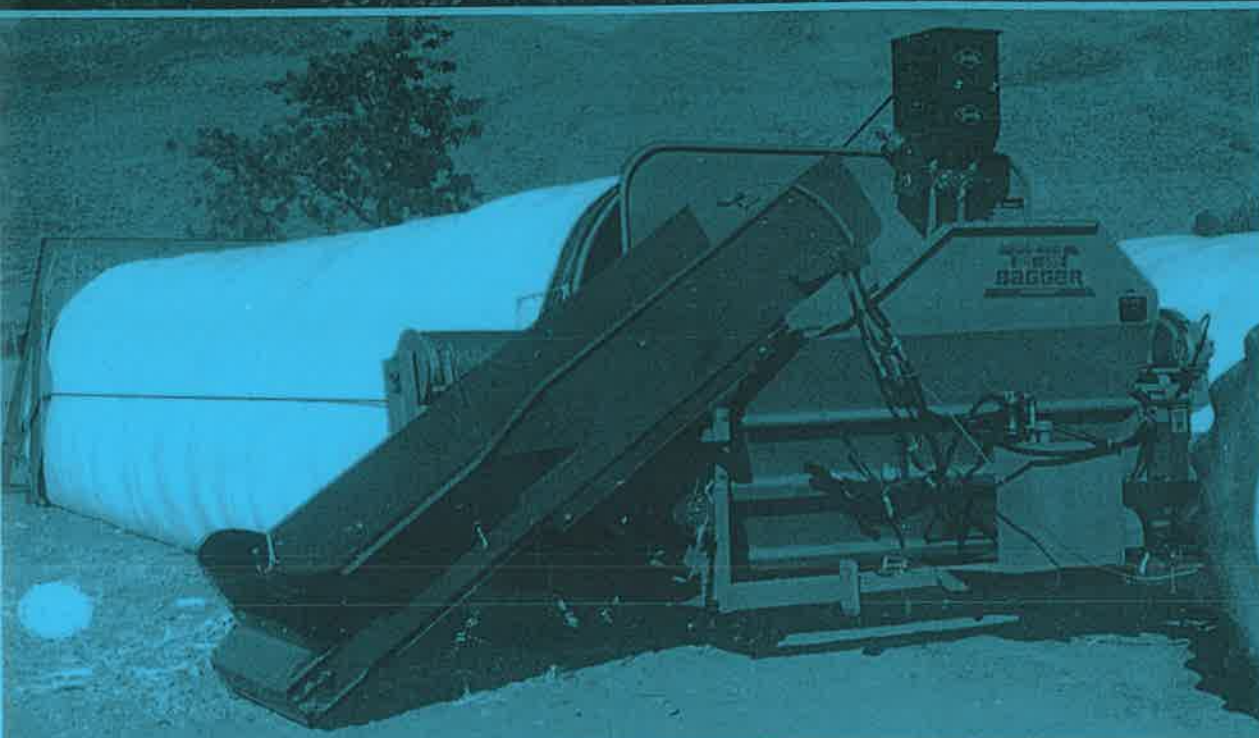
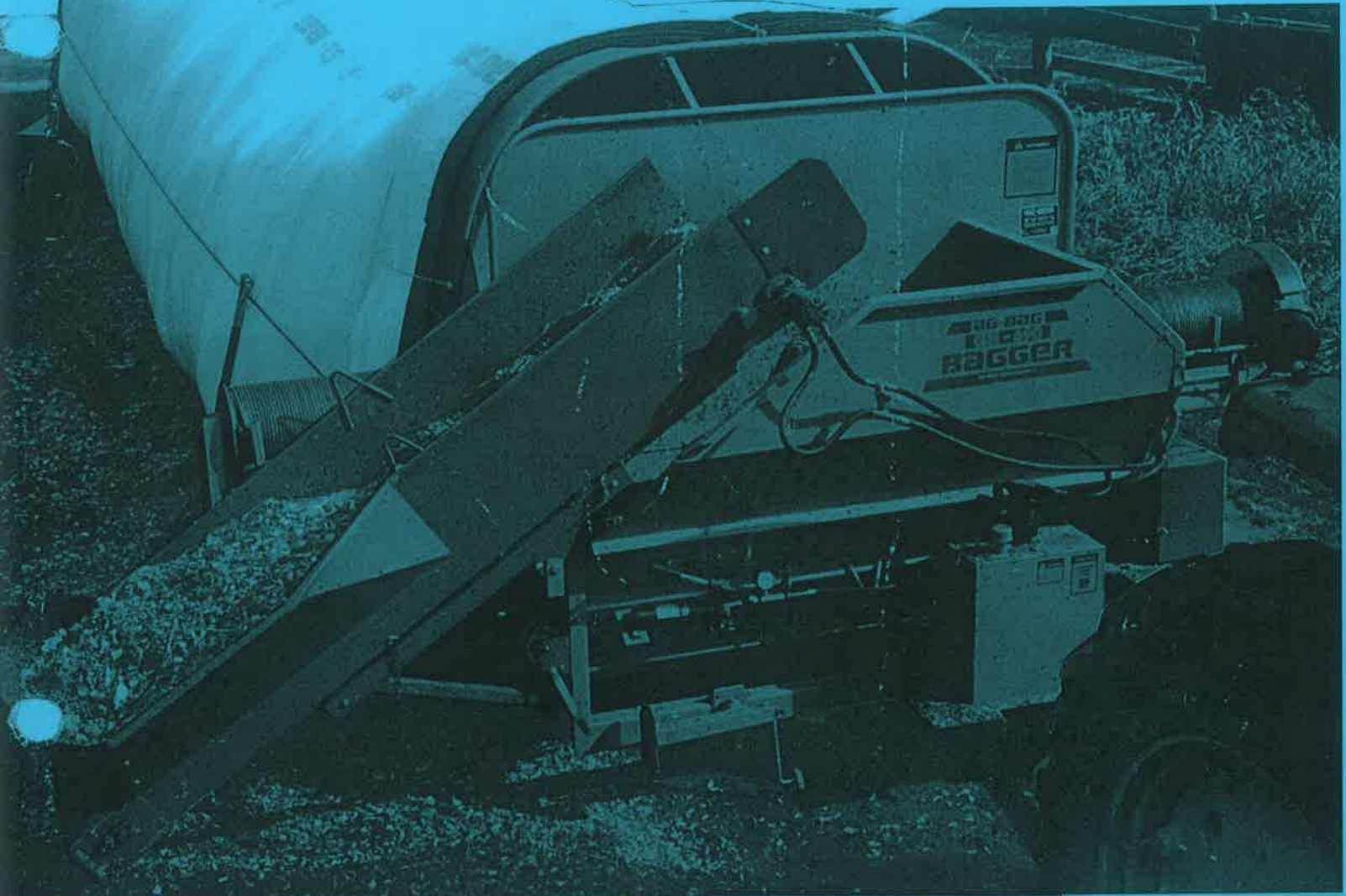
2320 SE Ag-Bag Lane • Warrenton, OR 97146 USA  
CALL (503) 861-1644 FAX (503) 861-2527  
Telex #151034

YOUR NEAREST DEALER:



# AG-BAGGER®

MODELS GH-690 AND GH-680



**HEAVY DUTY  
COMPACT  
BAGGERS  
STRONG ON  
PERFORMANCE  
& MOBILITY**



AG-BAG CORPORATION

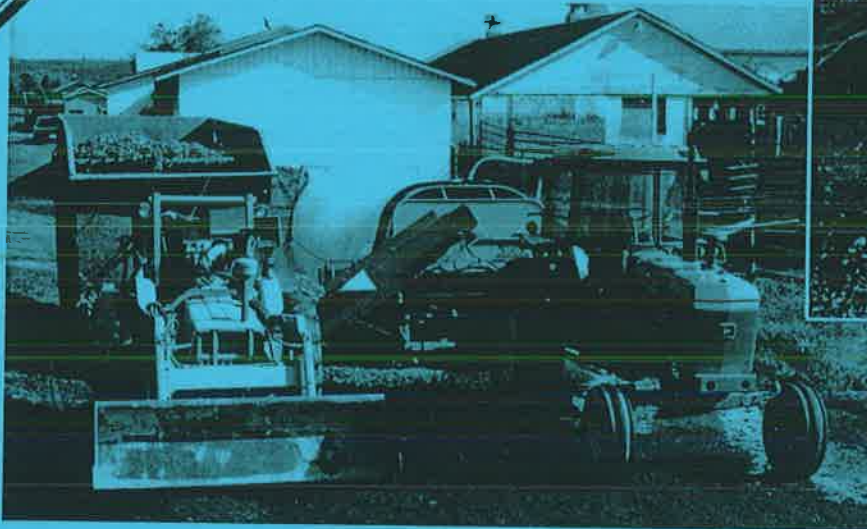
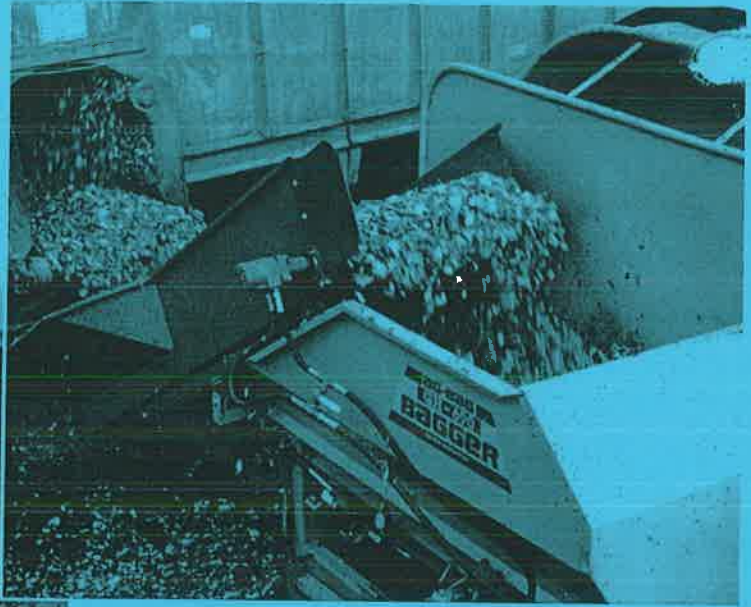
**AG-BAGGERS FROM THE SEALED FEED STORAGE LEADER!**



# BAGGER®

## GH-680 & GH-690 BAGGERS

The Model GH-680 and GH-690 Ag-Baggers are heavy duty compact baggers that are designed to be utilized with a side unload forage wagon. The high capacity conveyor is adjustable to match the



height of the forage wagon and easily retractable for transporting. This side load feature enables the machine to be moved easily to each bagging location and is an ideal unit for the custom operator and family farm sharing.

### FEATURES YOU WANT MOST:

**Positive Compaction Control . . .** a must in the bagging process. Hydraulic disc braking allows the operator to adjust to proper pressure for individual crops and moisture conditions. The Bagger's easily read gauge and pump control make it easy.

**Heavy Duty, High Capacity Conveyor . . .** This retractable conveyor will take the feed as fast as your forage wagon will unload it. Easy height control lets you adjust to different wagon levels.

**Dual D-140 Chains . . .** These dual chains with chain tighteners keep a steady flow of power to the compaction rotor. Changeable sprocket lets you match tractor horsepower.

### SPECIFICATIONS

<u>Model</u>	*(new for 1988)	<u>GH-690</u>	<u>GH-680</u>
Length in Transportation		7'9"	7'9"
Width in Transport Position		13'	13'
Height in Transport Position		7'10"	7'10"
Ground Clearance		6"	6"
Maximum Width in Operating Position		12'6"	12'6"
With Conveyor		17'3"	17'3"
Power Requirements (540 PTO)		85 HP	75 HP
*Rotor		6'	6'
Drive Chain		D-140	D-140
Rotor Operating Speed		48 RPM	42 RPM
*Single Wrap Cable Length		200 Ft.	150 Ft.
Bag Sizes		9 x 135	8 x 95
		9 x 200	8 x 150
*Deflector Length		3 Ft.	3 Ft.
Weight		5,395 lbs.	4,560 lbs.
*Hydraulic Package		12 GPM	12 GPM

**AG-BAG BAGS ARE AVAILABLE IN ALL SIZES TO MEET YOUR BUDGET.**

# AG-BAG®

SEALED FEED STORAGE SYSTEMS

OTHER QUALITY MACHINES:

- MIGHTY BITE® LOADING BUCKETS
- AG-BAG® LIVE FLOORS
- AG-BAG® AUGER BLENDERS

2320 SE Ag-Bag Lane • Warrenton, OR 97146 USA  
 CALL (503) 861-1644 FAX (503) 861-2527  
 Telex #151034



AG-BAG CORPORATION

YOUR NEAREST DEALER:

# FORWARD



This parts book is designed to aid the user in locating and ordering replacement parts for the Ag-Bagger silage compacting machine and its accessories.

The is broken down into eight groups for easy reference.

In our efforts to further improve our product, Ag-Bag Corporation claims the right to make updates and design changes without notification.

The serial number for the Ag-Bagger is stamped on the right side of the frame tube

Left and right of machine is determined by standing in front of the hopper looking at the tunnel face plate.



When ordering parts from your dealer, always give the following information:

1. Machine Name and Serial Number
2. Reference and Part Numbers
3. Page Number
4. Description of Part

To make your ordering easier upon receipt of your machine, fill in the following:

MACHINE SERIAL NUMBER: \_\_\_\_\_

START UP DATE: \_\_\_\_\_

## FORWARD



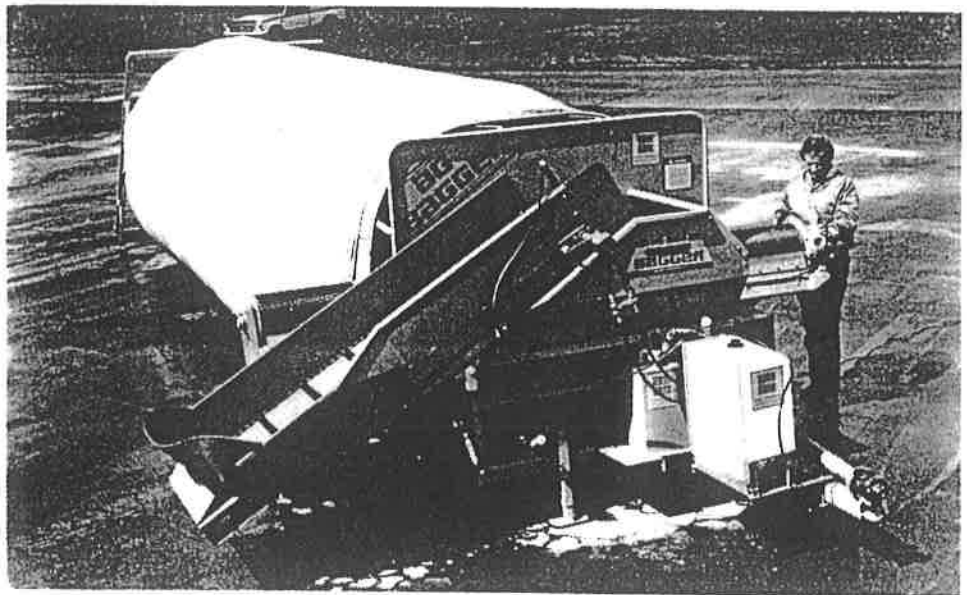
This parts book is designed to aid the user in locating and ordering replacement parts for the Ag-Bagger silage compacting machine and its accessories.

The is broken down into eight groups for easy reference.

In our efforts to further improve our product, Ag-Bag Corporation claims the right to make updates and design changes without notification.

The serial number for the Ag-Bagger is stamped on the right side of the frame tube

Left and right of machine is determined by standing in front of the hopper looking at the tunnel face plate.



When ordering parts from your dealer, always give the following information:

1. Machine Name and Serial Number
2. Reference and Part Numbers
3. Page Number
4. Description of Part

To make your ordering easier upon receipt of your machine, fill in the following:

MACHINE SERIAL NUMBER: \_\_\_\_\_

START UP DATE: \_\_\_\_\_

# INDEX

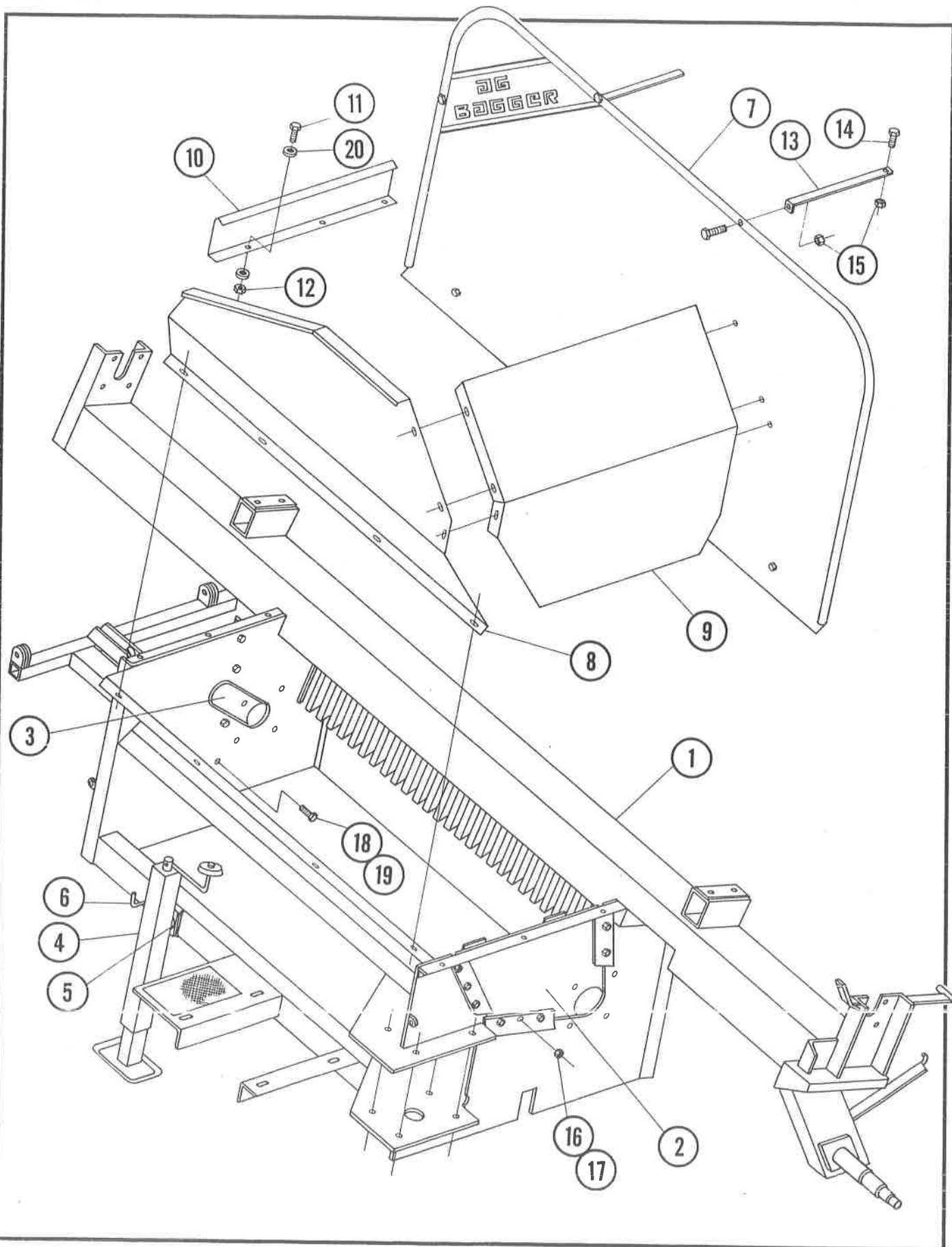


<i>GROUP</i>	<i>PAGE</i>
Frame Group .....	2
Cable Drum Assembly Group .....	4
Wheel Group .....	6
Rotor Group .....	8
Backstop Group .....	10
Hydraulics Group .....	12
Cross Conveyor Group .....	14
Miscellaneous Group .....	16
Notes .....	17





# FRAME GROUP



# FRAME GROUP



REF. NO.	PART NO.	QTY	DESCRIPTION
1	2A	1	Frame Assembly
2	2B	1	Rotor Access Plate - Drive Side
3	2C	1	Rotor Access Plate - Idler Side
4	2D	1	Jack - 5,000 Lb.
5	2E	1	Snap Ring - 2 1/2"
6	2F	1	Lock Pawl Replacement Kit
7	2G	1	Face Plate
8	2H	1	Front Shroud
9	2I	1	Side Shroud
10	2J	1	End Extension
11	2K	15	Capscrew - 1/4" N.C. x 3/4" Long - Grade 5
12	2L	15	Hexnut - 1/4" N.C. Nylok
13	2M	3	Face Plate Mounting Arm
14	2N	6	Capscrew - 5/16" N.C. x 2" Long - Grade 5
15	2O	6	Hexnut - 5/16" N.C. Nylok
16	2P	8	Capscrew - 7/16" N.C. x 1 1/4" Long - Grade 5 (Not Shown)
17	2Q	8	Hexnut - 7/16" N.C. Nylok
18	2R	4	Capscrew - 3/8" N.C. x 1 1/4" Long - Grade 5
19	2S	4	Hexnut - 3/8" N.C. Nylok (Not Shown)
20	2T	30	Flatwasher - 1/4"

# FRAME GROUP



REF. NO.	PART NO.	QTY	DESCRIPTION
1	2A	1	Frame Assembly
2	2B	1	Rotor Access Plate - Drive Side
3	2C	1	Rotor Access Plate - Idler Side
4	2D	1	Jack - 5,000 Lb. Tension Complete # 10095
5	2E	1	Snap Ring - 2 1/2" X 3/16" 704923 # 10487
6	2F	1	Lock Pawl Replacement Kit
7	2G	1	Face Plate
8	2H	1	Front Shroud
9	2I	1	Side Shroud
10	2J	1	End Extension
11	2K	15	Capscrew - 1/4" N.C. x 3/4" Long - Grade 5
12	2L	15	Hexnut - 1/4" N.C. Nylok
13	2M	3	Face Plate Mounting Arm
14	2N	6	Capscrew - 5/16" N.C. x 2" Long - Grade 5
15	2O	6	Hexnut - 5/16" N.C. Nylok
16	2P	8	Capscrew - 7/16" N.C. x 1 1/4" Long - Grade 5 (Not Shown)
17	2Q	8	Hexnut - 7/16" N.C. Nylok
18	2R	4	Capscrew - 3/8" N.C. x 1 1/4" Long - Grade 5
19	2S	4	Hexnut - 3/8" N.C. Nylok (Not Shown)
20	2T	30	Flatwasher - 1/4"
		35	Stripper Bar <del>with</del> # 4131 10022 4020001 GG90 Tunnel 9' # 10450 Axel # 10961 Upper Panel Front # 11205 or 11856 " " Left # 11206 Cable Rewind Crank # 11207 " " Shoes # 11208 " " Coupler # 11209

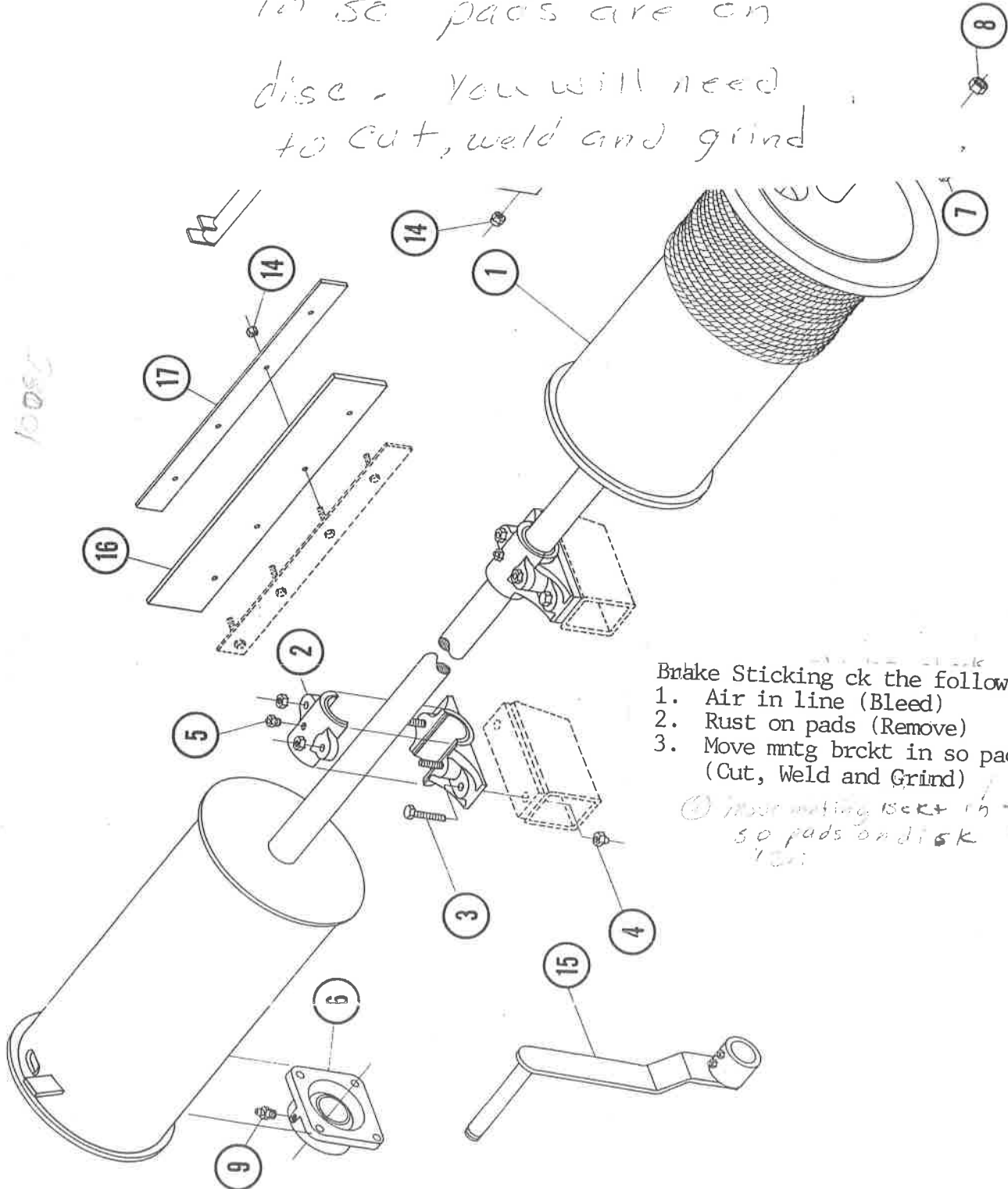




# Field C Brake Pads Crumble

6/30/14

Move ~~mounting~~ <sup>mounting</sup> brackets  
in so pads are on  
disc. You will need  
to cut, weld and grind



- Brake Sticking ck the following:
1. Air in line (Bleed)
  2. Rust on pads (Remove)
  3. Move mntg brckt in so pads on disc (Cut, Weld and Grind)

① move mounting brckt in so pads on disk  
100%

# CABLE DRUM ASSEMBLY GROUP



REF. NO.	PART NO.	QTY	DESCRIPTION
1	4A	1	Cable Drum Assembly
2	4B	2	Split Babbit Bearing
3	4C	4	Capscrew - 5/8" N.C. x 2 1/2" Long - Grade 5
4	4D	4	Hexnut - 5/8" N.C. Nylok
5	4E	2	Grease Nipple - 1/4" MNPT Straight
6	4F	2	Ball Bearing
7	4G	8	Capscrew - 1/2" N.C. x 1 3/4" Long - Grade 5
8	4H	8	Hexnut - 1/2" N.C. Nylok
9	4I	2	Grease Nipple - 1/8" MNPT Straight
10	4J	2	7/16" Galvanized Wire Rope
11	4K	2	3/8" Galvanized Wire Rope Clamp
12	4L	2	Cable Rewind Support Assembly
13	4M	2	Capscrew - 5/16" N.C. x 2" Long - Grade 5
14	4N	10	Hexnut - 5/16" N.C. Nylok
15	4O	1	Rewind Crank
16	4P	2	Cable Wipe
17	4Q	2	Cable Wipe Keeper

# CABLE DRUM ASSEMBLY GROUP



REF. NO.	PART NO.	QTY	DESCRIPTION
1	4A	1	Cable Drum Assembly #11551
2	4B	2	Split Babbit Bearing #10143
3	4C	4	Capscrew - 5/8" N.C. x 2 1/2" Long - Grade 5
4	4D	4	Hexnut - 5/8" N.C. Nylok
5	4E	2	Grease Nipple - 1/4" MNPT Straight
6	4F	2	Ball Bearing #10158 & Bolt
7	4G	8	Capscrew - 1/2" N.C. x 1 3/4" Long - Grade 5
8	4H	8	Hexnut - 1/2" N.C. Nylok
9	4I	2	Grease Nipple - 1/8" MNPT Straight
10	4J	2	7/16" Galvanized Wire Rope #150 ea (200') - (150') #109.29 ea (250') #187.71
11	4K	2	3/8" Galvanized Wire Rope Clamp
12	4L	2	<del>Cable Rewind Support Assembly</del> Replaced w/ cable rewind guide #1142
13	4M	2	Capscrew - 5/16" N.C. x 2" Long - Grade 5
14	4N	10	Hexnut - 5/16" N.C. Nylok
15	4O	1	Rewind Crank #11207
16	4P	2	Cable Wipe
17	4Q	2	Cable Wipe Keeper

11207

11208  
Cable

If pin is wearing on winch the winch is installed upside down.

#12 Cable Rewind Bracket w/pins #11141

- 2) Cable rewind shoe #1142
- 2) H Brackets
- 2) mounting pins
- 4) Weld on tabs

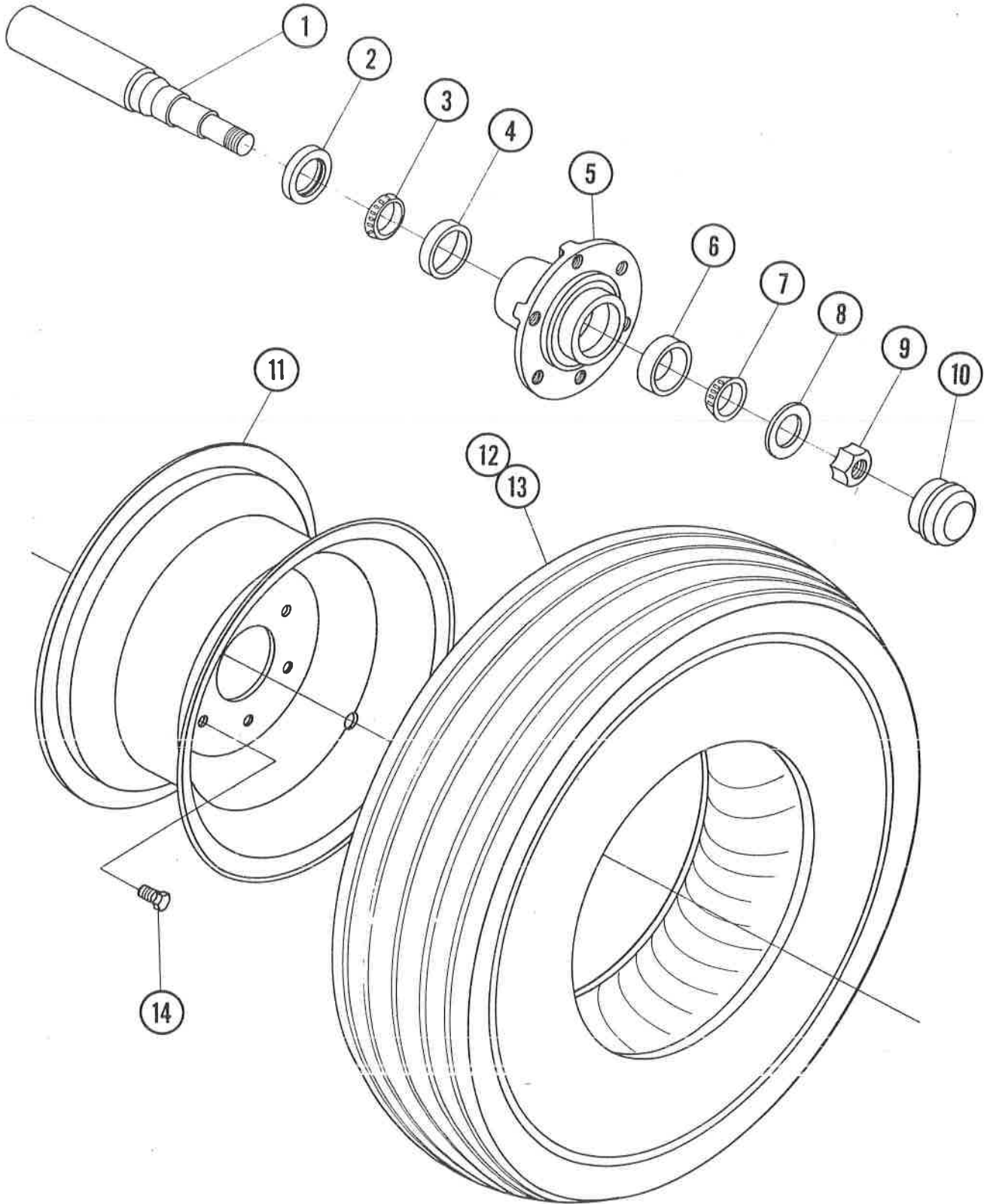
1991  
Cable Rewind Slide Kit (replaces old 6000 series cable rewind eye.)  
ONE SET

- |       |     |                    |
|-------|-----|--------------------|
| #     | QTY |                    |
| 11902 | 4   | Cable rewind rings |
| 11903 | 2   | Cable Rewind heads |
| 11904 | 2   | Cable Rewind shoe  |





# WHEEL GROUP



# WHEEL GROUP



REF. NO.	PART NO.	QTY	DESCRIPTION
1	6A	2	Spindle #10961 (Nrel) Axel Washers #10964
2	6B	2	Grease Seal #11725
3	6C	2	Inner Bearing Cone
4	6D	2	Inner Bearing Cup } Large #11723
5	6E	2	Hub 6 Bolt #10165
6	6F	2	Outer Bearing Cup } small #11724
7	6G	2	Outer Bearing Cone }
8	6H	2	Washer
9	6I	2	Spindle Nut - 5/8" NF Nylok
10	6J	2	Hub Cap #10166
11	6K	2	Wheel
12	6L	2	Tire - 11L15 - 8 Ply Flotation 7.50-16LT #10490
13	6M	2	Tire Tube - 11L15 16LT
14	6N	12	Wheel Bolt 11

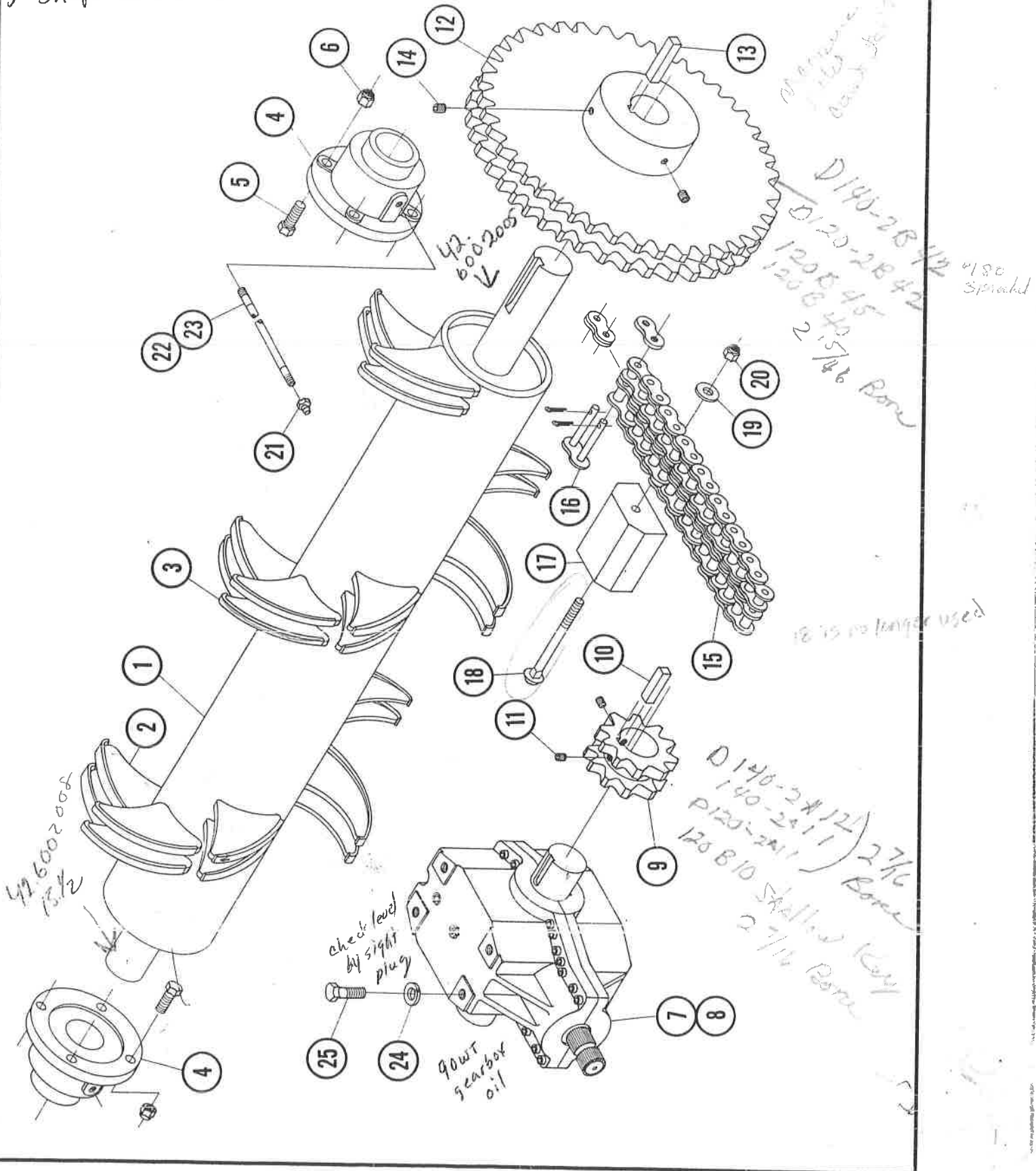


Bearing keeps breaking ck the following:

1. Rotor mis-aligned
2. Shaft bent

# ROTOR GROUP

Stub Shaft on 690 goes in 11" Donut is 2" thick





# ROTOR GROUP



REF. NO.	PART NO.	QTY	DESCRIPTION
1	8A	1	Rotor Assembly With Teeth
2	8B	30	Rotor Tooth
3	8C	30	Rotor Tooth Cap
4	8D	2	Roller Bearing - 2 15/16"
5	8E	8	Capscrew - 3/4" N.C. x 2" Long - Grade 5
6	8F	8	Hexnut - 3/4" N.C. Nylok
7	8G	1	Gearbox
8	8H	-	Gear Lube EP 80-90
9	8I	1	Drive Sprocket - #140-2 - 10 Tooth STD.
10	8J	1	Key - 5/8" x 5/8" x 3" Long
11	8K	2	Set Screw - 3/8" N.C. x 1/2" Long
12	8L	1	Driven Sprocket - #140-2 - 42 Tooth
13	8M	1	Key - 3/4" x 3/4" x 4" Long
14	8N	2	Set Screw - 1/2" N.C. x 1/2" Long
15	8O	1	Chain - #140-2
16	8P	1	Offset Link - #140-2
17	8Q	1	Tensioner
18	8R	1	Carriage Bolt - 5/8" N.C. x 7 1/2" Long
19	8S	1	Flatwasher 9/16"
20	8T	1	Hexnut - 5/8" N.C. Nylok
21	8U	2	Grease Nipple - 1/8" FNPT Straight
22	8V	1	Grease Hose x 20" Long - L.H. 1/8" NPT Both Ends
23	8W	1	Grease Hose x 26" Long - R.H. 1/8" NPT Both Ends
24	8X	7	Lockwasher - 5/8"
25	8Y	7	Capscrew - 5/8" N.C. x 2" Long - Grade 5

# ROTOR GROUP



1) Crown 107  
 2) Eng 1000 Blue 470

REF. NO.	PART NO.	QTY	DESCRIPTION
1	8A	1	Rotor Assembly With Teeth #10423
2	8B	30	Rotor Tooth #9.75 #10024 = 42.1020019
3	8C	30	Rotor Tooth Cap #fine caps #10028 36inset = 42.1020003
4	8D	2	Roller Bearing - 2 15/16" See Below
5	8E	8	Capscrew - 3/4" N.C. x 2" Long - Grade 5
6	8F	8	Hexnut - 3/4" N.C. Nylok
7	8G	1	Gearbox
8	8H	-	Gear Lube EP 80-90
9	8I	1	Drive Sprocket - #140-2 - 10 Tooth STD. See below
10	8J	1	Key - 5/8" x 5/8" x 3" Long #10423
11	8K	2	Set Screw - 3/8" N.C. x 1/2" Long
12	8L	1	Driven Sprocket - #140-2 - 42 Tooth See Below
13	8M	1	Key - 3/4" x 3/4" x 4" Long #10424
14	8N	2	Set Screw - 1/2" N.C. x 1/2" Long
15	8O	1	Chain - #140-2 #10446 JR-700
16	8P	1	Offset Link - #140-2 #10258 JR-700
17	8Q	1	Tensioner #1030
18	8R	1	Carriage Bolt - 5/8" N.C. x 7 1/2" Long
19	8S	1	Flatwasher 9/16"
20	8T	1	Hexnut - 5/8" N.C. Nylok
21	8U	2	Grease Nipple - 1/8" FNPT Straight
22	8V	1	Grease Hose x 20" Long - L.H. 1/8" NPT Both Ends #10118 (Grease whip)
23	8W	1	Grease Hose x 26" Long - R.H. 1/8" NPT Both Ends Special Order (king)
24	8X	7	Lockwasher - 5/8"
25	8Y	7	Capscrew - 5/8" N.C. x 2" Long - Grade 5

10772

JR-700

Single Chain 12054 G-9 series  
 #10257K  
 10' #10261

#7 Gearbox Double Output 731 #10132  
 Gearbox Single Output 731 w/4" shaft #11746

#12 Measure pitch and count teeth  
 { D140-2B42 pitch 1 3/4" #11303  
 D120-2B42 pitch 1 1/2"  
 120-B45 #11995  
 120-B40 #10200

Need said  
 - # of gearbox  
 Input shaft  
 etc. #20366  
 Output shaft  
 sprocket to  
 gearbox

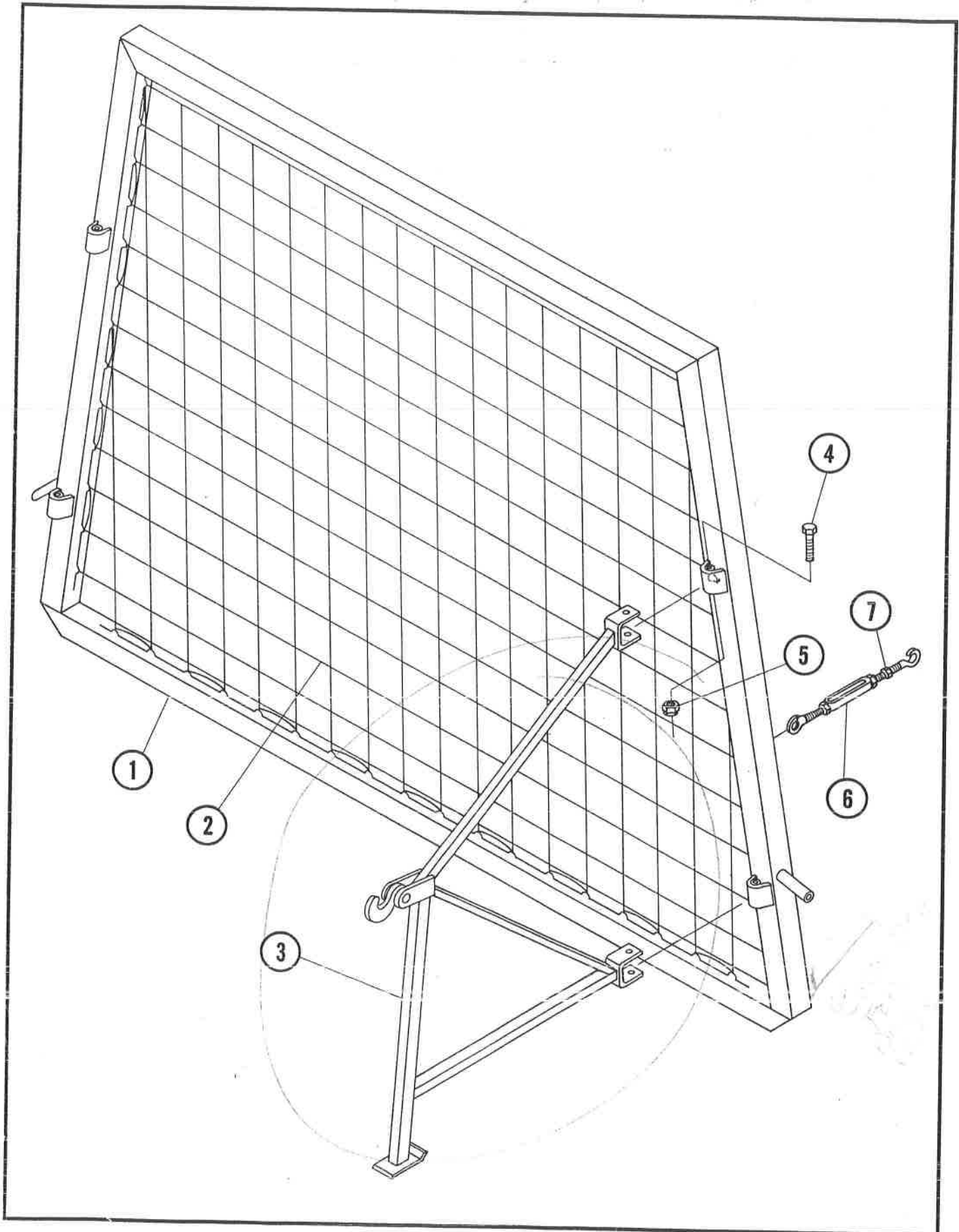
#9  
 { D140-2A12 #11275  
 140-2A11 #11279  
 120-2A11 #10235  
 120/120 shallow key 2 7/16 Bore #10222

#4 1987 Bearing Link EFR-22447A #11702 42.1510025 Round housing  
 1990 - Bearing Type E 2 15/16 Bore #11703  
 1991 - Bearing Link Belt EFR-22447A #11703

37 5/16  
 10 5/16



# BACKSTOP GROUP



# BACKSTOP GROUP



REF. NO.	PART NO.	QTY	DESCRIPTION
1	10A	1	Backstop Frame
2	10B	1	Rope
3	10C	2	Side Support
4	10D	4	Capscrew - 1/2" N.C. x 4" Long - Grade 5
5	10E	4	Hexnut - 1/2" N.C. Nylok
6	10F	2	Turnbuckle - 1/2"
7	10G	2	Jam Nut - 1/2" N.C.



# BACKSTOP GROUP



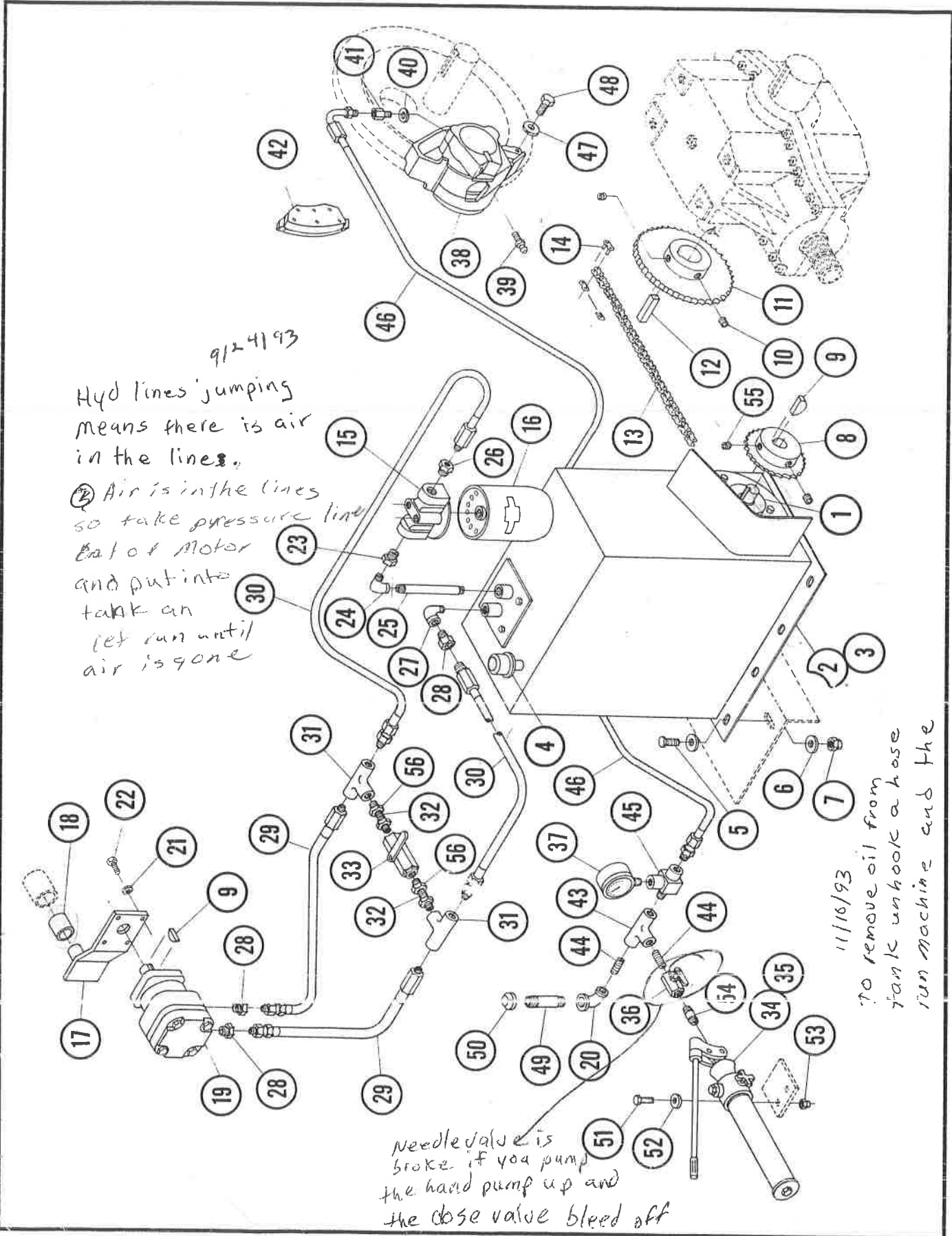
REF. NO.	PART NO.	QTY	DESCRIPTION
1	10A	1	Backstop Frame # 10180
2	10B	1	Rope #10352 280' 42.156000 <sup>00</sup> 5
3	10C	2	Side Support Backstop arm #10481 old machine
4	10D	4	Capscrew - 1/2" N.C. x 4" Long - Grade 5
5	10E	4	Hexnut - 1/2" N.C. Nylok
6	10F	2	Turnbuckle - 1/2" #10049
7	10G	2	Jam Nut - 1/2" N.C.
			#3 Back Stop Foot (new 6000) #11946



# HYDRAULICS GROUP

H-18.011 AW 32

Anti wear  
Anti Form



9/24/93

Hyd lines jumping means there is air in the lines.

② Air is in the lines so take pressure line out of Motor and put into tank and let run until air is gone

Needle valve is broke if you pump the hand pump up and the close valve bleed off

11/10/93

To remove oil from tank unhook a hose run machine and the pump will run it out.

Larry Anderson

# HYDRAULICS GROUP



REF. NO.	PART NO.	QTY	DESCRIPTION
1	12A	1	Pump
2	12B	1	Reservoir
3	12C	-	Hydraulic Oil EP-46
4	12D	1	Filler Cap
5	12E	4	Capscrew - 3/8" N.C. x 1 1/4" Long - Grade 5
6	12F	8	Flatwasher - 3/8"
7	12G	4	Hexnut - 3/8" N.C. Nylok
8	12H	1	Driven Sprocket #40-B - 29 Tooth
9	12I	2	Woodruff Key - 1/4" x 1" Long
10	12J	2	Set Screw - 3/8" N.C. x 1/2" Long
11	12K	1	Drive Sprocket #40-B - 48 Tooth
12	12L	1	Key - 3/8" x 3/8" x 1 1/4" Long
13	12M	1	Chain #40
14	12N	1	Connecting Link #40
15	12O	1	Filter Unit
16	12P	1	Filter Cartridge
17	12Q	1	Hydraulic Motor Mount
18	12R	1	Rubber Bushing - 1" ID x 1 1/2" Long
19	12S	1	Hydraulic Motor
20	12T	1	90° Reducing Elbow 1/2" - 1/4" - Sch. 80
21	12U	4	Lockwasher - 3/8"
22	12V	4	Capscrew - 3/8" N.C. x 1" Long - Grade 5
23	12W	1	Reducing Bushing 3/4" - 1/2"
24	12X	1	90° Street Elbow 1/2" NPT - Sch. 40
25	12Y	1	Nipple - 1/2" NPT x 6" Long - Sch. 40
26	12Z	1	Reducing Bushing 3/4" - 3/8"
27	12ZA	1	90° Street Elbow - 1/2" NPT - Sch. 80
28	12ZB	3	Reducing Bushing 1/2" - 3/8"
29	12ZC	2	Hose 3/8" x 12" Long
30	12ZD	2	Hose 3/8" x 48" Long
31	12ZE	2	Hydraulic Straight Tee - 3/8" NPT
32	12ZF	2	Close Nipple - 1/4" NPT
33	12ZG	1	Ball Valve - 1/4" - 2,000 Lb.
34	12ZH	1	Hand Pump
35	12ZI	-	Hydraulic Jack Oil ONLY
36	12ZJ	1	Ball Valve - 1/4" - 2,000 Lb.
37	12ZK	1	Gauge - 0-1,500 Lb.
38	12ZL	1	Disc Brake Caliper
39	12ZM	1	Bleeder Valve
40	12ZN	1	Copper Washer
41	12ZO	1	Adapter
42	12ZP	1	Disc Brake Pad Set
43	12ZQ	1	Hydraulic Straight Tee - 1/4" NPT
44	12ZR	2	Close Nipple - 1/4" NPT
45	12ZS	1	Service Tee - 1/4" NPT
46	12ZT	1	Hose - 1/4" x 11' Long
47	12ZU	2	Lockwasher - 1/2"
48	12ZV	2	Capscrew - 1/2" N.C. x 1" Long - Grade 5
49	12ZW	1	Nipple - 1/2" NPT x 4" Long - Sch. 80
50	12ZX	1	Pipe Cap - 1/2" FNPT - Sch. 80
51	12ZY	2	Capscrew - 1/4" N.C. x 1" Long - Grade 5
52	12ZZ	2	Flatwasher - 1/4"
53	12ZZA	2	Hexnut - 1/4" N.C. Nylok
54	12ZZB	1	Nipple - 1/4" NPT x 1 1/2" Long
55	12ZZC	2	Set Screw - 5/16" N.C. x 3/8" Long
56	12ZZD	4	Reducing Bushing 3/8" - 1/4"

#38 Early models air brake 224 # 14123 (L) 12 00 000 #42 Ask if brake is  
 Second Ford caliper 223 # 11759 (R) 1500954 Ford  
 To Add Second brake update kit # 11836



# HYDRAULICS GROUP

Ford pads 42.1500295 mount = 42.1500833 223  
 Ford 224 caliper 42.1500055 mount = 42.1500834 224

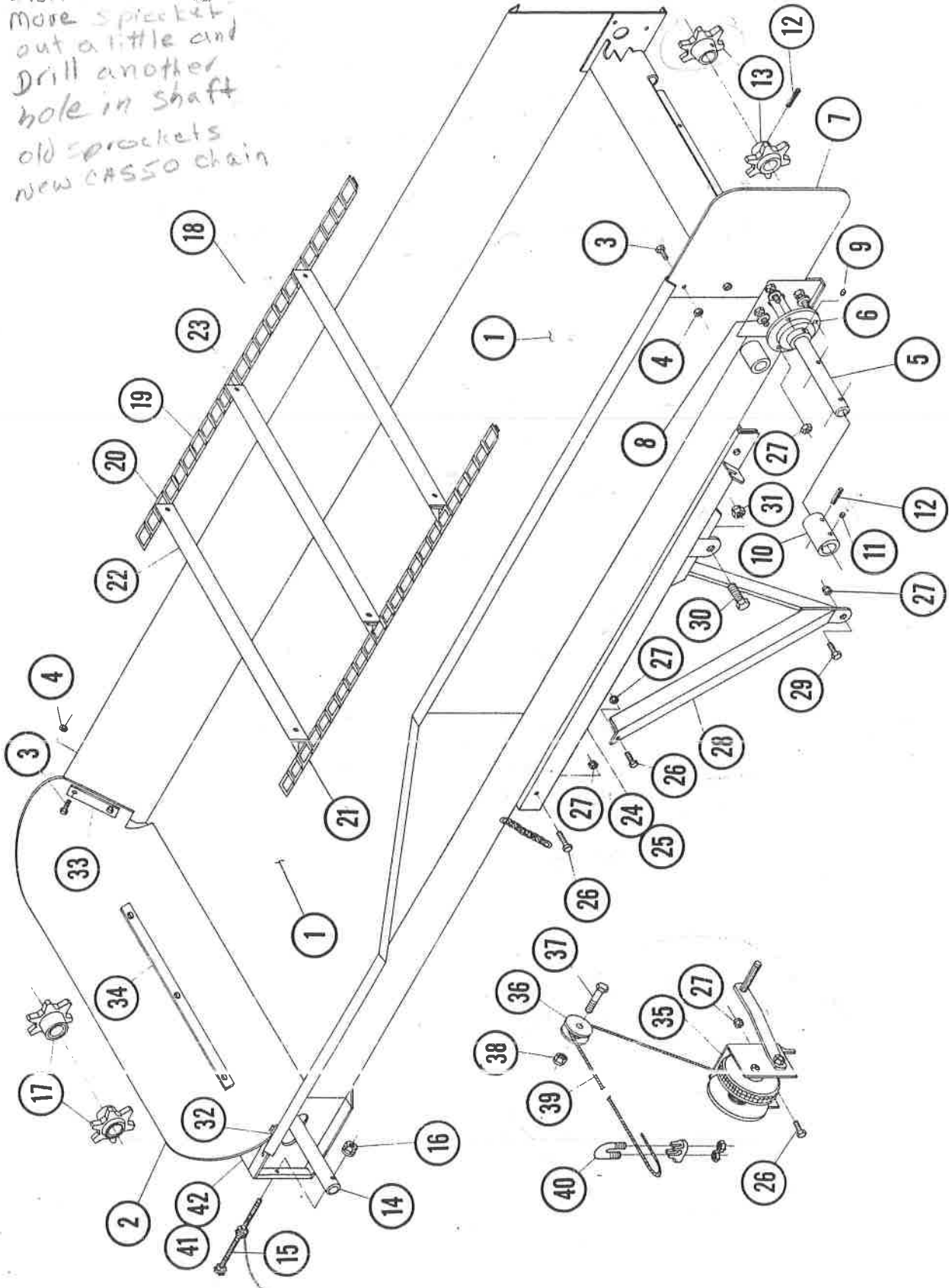
REF. NO.	PART NO.	QTY	DESCRIPTION
1	12A	1	Pump <del>Blackhawk</del> #10016
2	12B	1	Reservoir
3	12C	.	Hydraulic Oil EP-46 9 1/2 gallons
4	12D	1	Filler Cap 1013 42.1500885
5	12E	4	Capscrew - 3/8" N.C. x 1 1/4" Long - Grade 5
6	12F	8	Flatwasher - 3/8"
7	12G	4	Hexnut - 3/8" N.C. Nylok
8	12H	1	Driven Sprocket #40-B-29 Tooth 40BS16 1" Bore (Hyd Pack) #10208
9	12I	2	Woodruff Key - 1/4" x 1" Long
10	12J	2	Set Screw - 3/8" N.C. x 1/2" Long
11	12K	1	Drive Sprocket #40-B-48 Tooth 48BS40 1 1/4" Bore (Hyd Pack) #10208
12	12L	1	Key - 3/8" x 3/8" x 1 1/4" Long
13	12M	1	Chain #40 #10444
14	12N	1	Connecting Link #40 #10240
15	12O	1	Filter Unit #10282 - 1540147
16	12P	1	Filter Cartridge #10283
17	12Q	1	Hydraulic Motor Mount #11720
18	12R	1	Rubber Bushing - 1" ID x 1 1/2" Long
19	12S	1	Hydraulic Motor 101-1002 #11678
20	12T	1	90° Reducing Elbow 1/2" - 1/4" - Sch. 80
21	12U	4	Lockwasher - 3/8"
22	12V	4	Capscrew - 3/8" N.C. x 1" Long - Grade 5
23	12W	1	Reducing Bushing 3/4" - 1/2"
24	12X	1	90° Street Elbow 1/2" NPT - Sch. 40
25	12Y	1	Nipple - 1/2" NPT x 6" Long - Sch. 40
26	12Z	1	Reducing Bushing 3/4" - 3/8"
27	12ZA	1	90° Street Elbow - 1/2" NPT - Sch. 80
28	12ZB	3	Reducing Bushing 1/2" - 3/8"
29	12ZC	2	Hose 3/8" x 12" Long
30	12ZD	2	Hose 3/8" x 48" Long
31	12ZE	2	Hydraulic Straight Tee - 3/8" NPT
32	12ZF	2	Close Nipple - 1/4" NPT
33	12ZG	1	Ball Valve - 1/4" - 2,000 Lb. 10043 N8005 Interchangeable
34	12ZH	1	Hand Pump Blackhawk #10102
35	12ZI	.	Hydraulic Jack Oil ONLY Black Hawk Pump
36	12ZJ	1	Ball Valve - 1/4" - 2,000 Lb. #10375 N4005 Interchangeable
37	12ZK	1	Gauge - 0-1,500 Lb. use 3000163
38	12ZL	1	Disc Brake Caliper See Above 150055 - Brake Prior to 1991 Ford 1991 Mico
39	12ZM	1	Bleeder Valve attached w/ disc Brake caliper
40	12ZN	1	Copper Washer
41	12ZO	1	Adapter Fitting #10410 (Adelman)
42	12ZP	1	Disc Brake Pad Set 680 Ford #10403 3-890 mico #11223
43	12ZQ	1	Hydraulic Straight Tee - 1/4" NPT #1500295 Mico motor mount #11213
44	12ZR	2	Close Nipple - 1/4" NPT
45	12ZS	1	Service Tee - 1/4" NPT
46	12ZT	1	Hose - 1/4" x 11' Long #10712 #1475-04 Ford 223/224
47	12ZU	2	Lockwasher - 1/2" 73-78 Ford Full
48	12ZV	2	Capscrew - 1/2" N.C. x 1" Long - Grade 5 Size passenger
49	12ZW	1	Nipple - 1/2" NPT x 4" Long - Sch. 80 car
50	12ZX	1	Pipe Cap - 1/2" FNPT - Sch. 80 Ford 223/224
51	12ZY	2	Capscrew - 1/4" N.C. x 1" Long - Grade 5 seal kit =
52	12ZZ	2	Flatwasher - 1/4"
53	12ZZA	2	Hexnut - 1/4" N.C. Nylok Napa United Brake 705
54	12ZZB	1	Nipple - 1/4" NPT x 1 1/2" Long
55	12ZZC	2	Set Screw - 5/16" N.C. x 3/8" Long
56	12ZZD	4	Reducing Bushing 3/8" - 1/4"





# CROSS CONVEYOR GROUP

Slats buckling  
More sprocket  
out a little and  
Drill another  
hole in shaft  
old sprockets  
new CASSO chain



# CROSS CONVEYOR GROUP



REF. NO.	PART NO.	QTY	DESCRIPTION
1	14A	1	Cross Conveyor Assembly
2	14B	1	Flexible End
3	14C	12	Capscrew - 1/4" N.C. x 3/4" Long - Grade 5
4	14D	12	Hexnut - 1/4" N.C. Nylok
5	14E	1	Headshaft
6	14F	2	Bearing - 1 1/8"
7	14G	1	Side Extension
8	14H	6	Flatwasher - 3/8"
9	14I	2	Set Screw - 5/16" NF x 5/16" Long
10	14J	1	Shaft Coupling
11	14K	1	Set Screw - 3/8" N.C. x 3/8" Long
12	14L	3	Roll Pin - 3/8" x 2" Long
13	14M	2	Drive Sprocket #55 - 6 Tooth
14	14N	1	Tail Shaft
15	14O	2	Tail Shaft Adjuster Bolt
16	14P	4	Serrated Lock Nut - 5/16" N.C.
17	14Q	2	Idle Sprocket W/Bushing #55 - 6 Tooth
18	14R	1	Complete Chain Assembly
19	14S	204	Detachable Link #55
20	14T	17	Attachment Link R.H. #55
21	14U	17	Attachment Link L.H. #55
22	14V	17	Chain Slat
23	14W	34	Rivet - 1/4"
24	14X	1	Cross Conveyor Slide (Not Shown)
25	14Y	1	Cross Conveyor Slide Retainer
26	14Z	4	Capscrew - 3/8" N.C. x 1" Long - Grade 5
27	14ZA	11	Hexnut - 3/8" N.C. Nylok
28	14ZB	1	Diagonal Brace
29	14ZC	1	Capscrew - 3/8" N.C. x 1 1/4" Long - Grade 5
30	14ZD	2	Capscrew - 5/8" N.C. x 2 1/4" Long - Grade 5
31	14ZE	2	Hexnut - 5/8" N.C. Nylok
32	14ZF	1	Flexible End Stiffener R.H.
33	14ZG	1	Flexible End Stiffener L.H.
34	14ZH	1	Flexible End Stiffener Center
35	14ZI	1	Winch - 1,000 Lb.
36	14ZJ	1	Pulley
37	14ZK	1	Capscrew - 1/2" N.C. x 2 1/2" Long - Grade 5
38	14ZL	1	Hexnut - 1/2" N.C. Nylok
39	14ZM	1	3/16" Galvanized Wire Rope
40	14ZN	1	3/16" Galvanized Wire Rope Clamp
41	14ZO	1	Sliding Floor Extension (Not Shown)
42	14ZP	1	Bolt-on End Cap (Not Shown)

# CROSS CONVEYOR GROUP



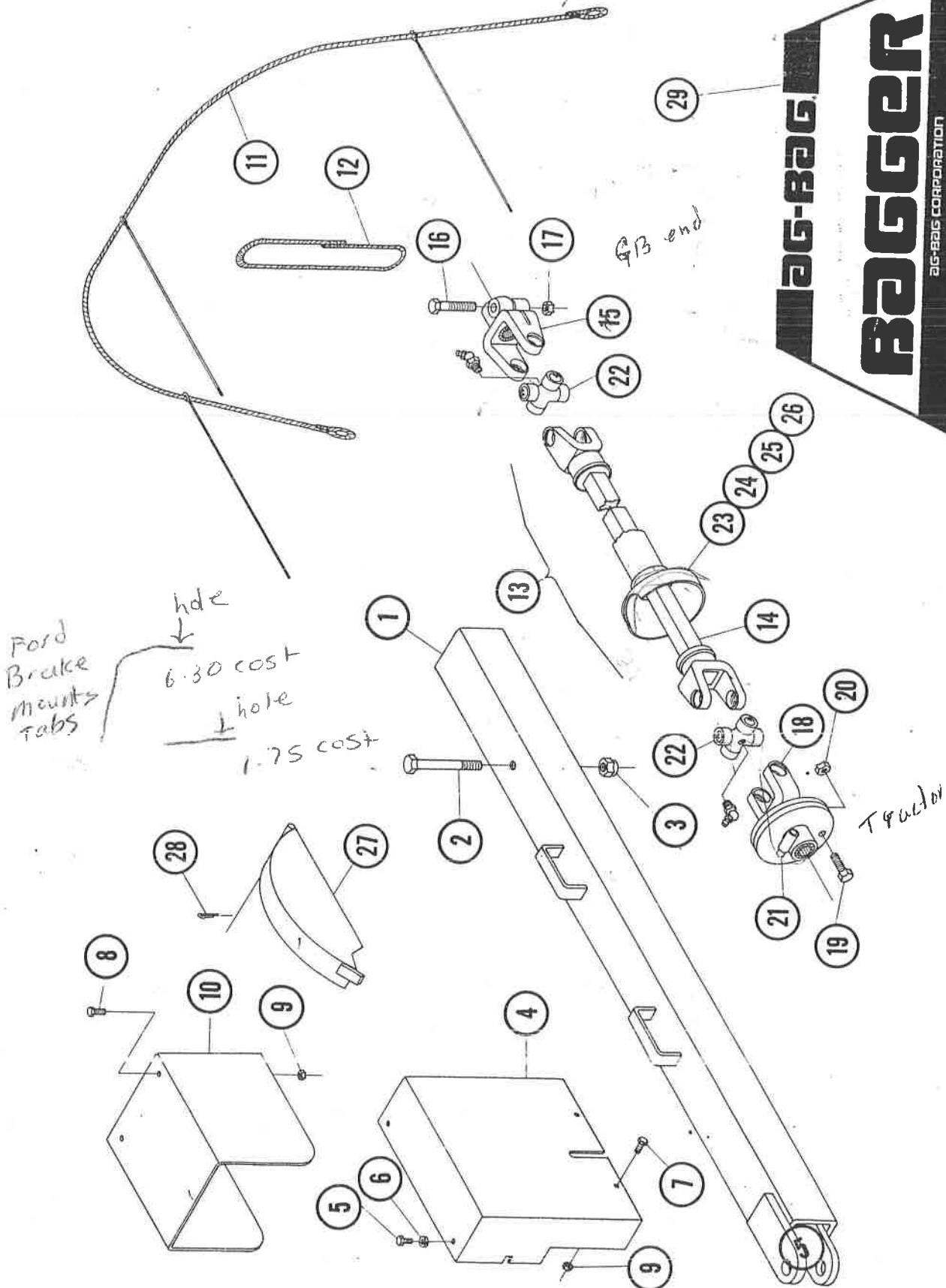
REF. NO.	PART NO.	QTY	DESCRIPTION
1	14A	1	Cross Conveyor Assembly #11454
2	14B	1	Flexible End
3	14C	12	Capscrew - 1/4" N.C. x 3/4" Long - Grade 5
4	14D	12	Hexnut - 1/4" N.C. Nylok
5	14E	1	Headshaft 11846 #2-1080046
6	14F	2	Bearing - 1 1/8" W218EL #10144 1/2-1510006
7	14G	1	Side Extension
8	14H	1	Flatwasher - 3/8"
9	14I	2	Set Screw - 5/16" NF x 5/16" Long 1/8" = 6008005 1" = 6008004
10	14J	1	Shaft Coupling 1 1/8" - 1" prior to 1991 / 1991 1" - 1"
11	14K	1	Set Screw - 3/8" N.C. x 3/8" Long
12	14L	3	Roll Pin - 3/8" x 2" Long
13	14M	2	Drive Sprocket #55 - 6 Tooth 1120217
14	14N	1	Tail Shaft #11847 1080047
15	14O	2	Tail Shaft Adjuster Bolt #11847 for tail shaft kit
16	14P	4	Serrated Lock Nut - 5/16" N.C.
17	14Q	2	Idle Sprocket W/Bushing #55 - 6 Tooth Host 1120220
18	14R	1	Complete Chain Assembly #10439 chain push
19	14S	204	Detachable Link #55 - update CASSO
20	14T	17	Attachment Link R.H. #55 } 10440 of detachable CASSO
21	14U	17	Attachment Link L.H. #55 } Conn Link CASSO = 1520078
22	14V	17	Chain Slat 6006018
23	14W	34	Rivet - 1/4"
24	14X	1	Cross Conveyor Slide (Not Shown) #11217
25	14Y	1	Cross Conveyor Slide Retainer
26	14Z	4	Capscrew - 3/8" N.C. x 1" Long - Grade 5
27	14ZA	11	Hexnut - 3/8" N.C. Nylok
28	14ZB	1	Diagonal Brace
29	14ZC	1	Capscrew - 3/8" N.C. x 1 1/4" Long - Grade 5
30	14ZD	2	Capscrew - 5/8" N.C. x 2 1/4" Long - Grade 5
31	14ZE	2	Hexnut - 5/8" N.C. Nylok
32	14ZF	1	Flexible End Stiffener R.H. } 11370
33	14ZG	1	Flexible End Stiffener L.H. }
34	14ZH	1	Flexible End Stiffener Center }
35	14ZI	1	Winch - 1,000 Lb. Fulton Long Boom #10198
36	14ZJ	1	Pulley #11775
37	14ZK	1	Capscrew - 1/2" N.C. x 2 1/2" Long - Grade 5
38	14ZL	1	Hexnut - 1/2" N.C. Nylok
39	14ZM	1	3/16" Galvanized Wire Rope
40	14ZN	2	3/16" Galvanized Wire Rope Clamp
41	14ZO	1	Sliding Floor Extension (Not Shown)
42	14ZP	1	Bolt-on End Cap (Not Shown)

10/27 BF  
 with 120 Super  
 H chain you don't  
 need an offset  
 link to put it  
 together.



# MISCELLANEOUS GROUP

**BAGGER**  
BAG-BAG CORPORATION





# MISCELLANEOUS GROUP



REF. NO.	PART NO.	QTY	DESCRIPTION
1	16A	1	Field Hitch Assembly
2	16B	1	Capscrew - 5/8" N.C. x 5 1/2" Long - Grade 5
3	16C	1	Hexnut - 5/8" N.C. Nylok
4	16D	1	Chain Guard
5	16E	2	Self-Tap Screw - 1/4" N.C. x 1" Long
6	16F	2	Lockwasher - 1/4"
7	16G	2	Capscrew - 1/4" N.C. x 3/4" Long - Grade 5
8	16H	2	Capscrew - 1/4" N.C. x 1 1/4" Long - Grade 5
9	16I	4	Hexnut - 1/4" N.C. Nylok
10	16J	1	P.T.O. Guard
11	16K	1	Bag Support Bungee Cord Assembly
12	16L	2	Bag Pan Support Bungee Cord Assembly
13	16M	1	P.T.O. Shaft - Complete
14	16N	1	Shafts and Yokes Assembly
15	16O	1	Implement Yoke 27 Spline
16	16P	1	Capscrew - 5/8" N.C. x 3" Long - Grade 5
17	16Q	1	Hexnut 5/8" Nylok
18	16R	1	Snap Hitch Yoke - Tractor End
19	16S	1	Capscrew - 7/16" N.C. x 1 3/8" Long - Grade 2
20	16T	1	Hexnut - 7/16" N.C.
21	16U	1	Snap Hitch Pin Repair Kit
22	16V	2	Complete Cross Kit - Includes Lube Fitting
23	16W	1	Plastic Shield
24	16X	2	Nylon Bearing
25	16Y	2	Thrust Washer (Not Shown)
26	16Z	2	Snap Ring (Not Shown)
27	16ZA	1	Brake Rotor Guard
28	16ZB	1	Cotter Pin
29	16ZC	1	Decals - Complete Set

# MISCELLANEOUS GROUP



1/8 Takeup brg 42.1510078

REF. NO.	PART NO.	QTY	DESCRIPTION
1	16A	1	Field Hitch Assembly #11848
2	16B	1	Capscrew - 5/8" N.C. x 5 1/2" Long - Grade 5
3	16C	1	Hexnut - 5/8" N.C. Nylok
4	16D	1	Chain Guard #11835
5	16E	2	Self-Tap Screw - 1/4" N.C. x 1" Long
6	16F	2	Lockwasher - 1/4"
7	16G	2	Capscrew - 1/4" N.C. x 3/4" Long - Grade 5
8	16H	2	Capscrew - 1/4" N.C. x 1 1/4" Long - Grade 5
9	16I	4	Hexnut - 1/4" N.C. Nylok
10	16J	1	P.T.O. Guard #11194
11	16K	1	Bag Support Bungee Cord Assembly
12	16L	2	Bag Pan Support Bungee Cord Assembly
13	16M	1	P.T.O. Shaft - Complete #11457
14	16N	1	Shafts and Yokes Assembly
15	16O	1	Implement Yoke 27 Spline
16	16P	1	Capscrew - 5/8" N.C. x 3" Long - Grade 5
17	16Q	1	Hexnut 5/8" Nylok
18	16R	1	Snap Hitch Yoke - Tractor End 1 3/4 x 27 (35) (weasler)
19	16S	1	Capscrew - 7/16" N.C. x 1 3/8" Long - Grade 2
20	16T	1	Hexnut - 7/16" N.C.
21	16U	1	Snap Hitch/Pin Repair Kit
22	16V	2	Complete Cross Kit - Includes Lube Fitting #10369
23	16W	1	Plastic Shield 1500394 Weasler (Superceded by 42.00000 0000433 Shield)
24	16X	2	Nylon Bearing (42.0000434 kit)
25	16Y	2	Thrust Washer (Not Shown)
26	16Z	2	Snap Ring (Not Shown) #127 3/16
27	16ZA	1	Brake Rotor Guard 690 #11562
28	16ZB	1	Cotter Pin
29	16ZC	1	Decals - Complete Set

Cord Tunnel 42.1560000  
1 Long & 2 Short (4')

(weasler) New Yoke w/ two screw holes #11537 use 5/8" Ferry head Bolt

0000433 Shield  
42.00000  
42.0000434 kit

1500209 w/calls  
1500210 BIP \*  
\* Black now (7/19/91)  
\* Orange - G & G new 1991 (a few)  
\* Black - Weasler - Drive Line 35N  
\* Make the three drive shafts and end  
interchangeable

G & G PTO Have 2 shear pins (Tractor end) Plates  
Weasler PTO Yoke = 1 piece (Tractor end)

Air Flow Systems / 1-800-762-9876  
(Air Filter keeps clogging)  
Pre-Cleaner for Air Filter on Engine

Get Dimension of Vent on Roof 4/18/91

A-38-51

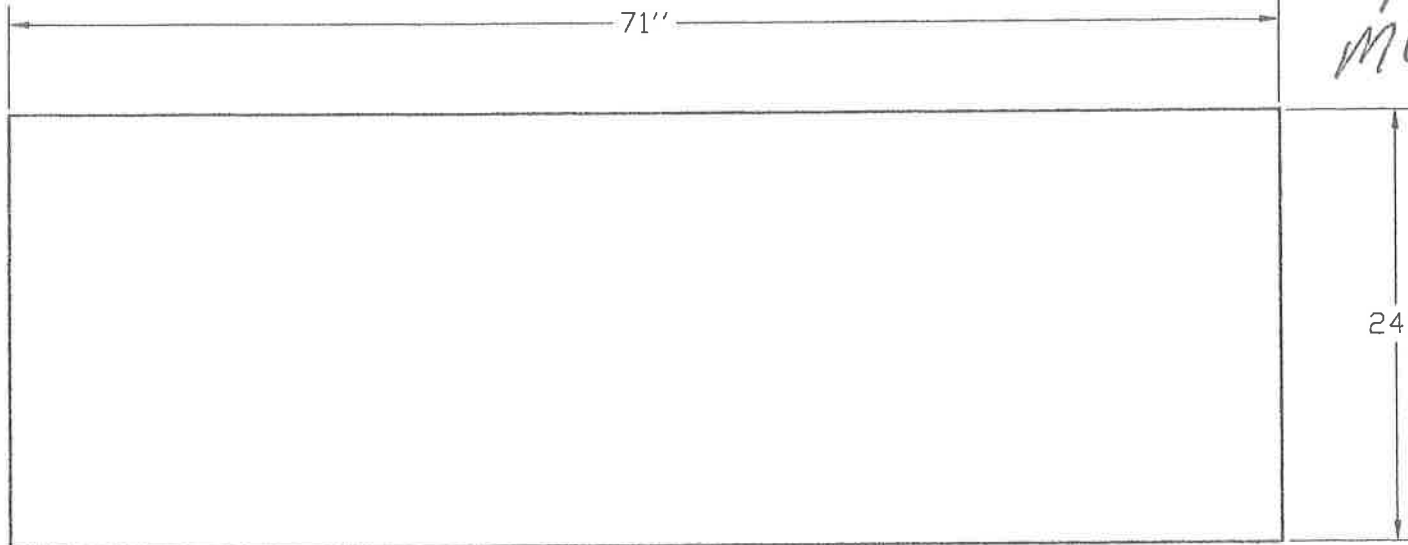
REV.  $\triangle$  0 No Revisions

DATE:

ITEM: 6012031


*Per Larry  
8/16/00  
ship*

*MWAR*



24"

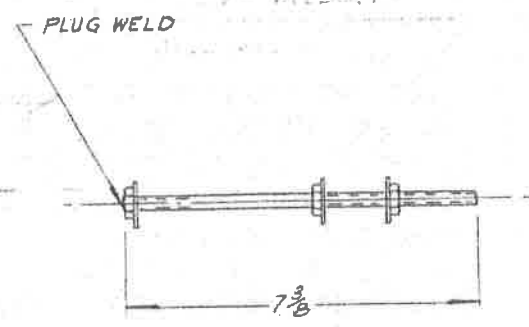
*Used  
in  
680/690  
Hopper*

TOLERANCE UNLESS OTHERWISE SPECIFIED: DECIMALS 1 PLACE 2 PLACE 3 PLACE ANGLES FRACTIONS : 16	DRAWN BY MSD 8/16/00	TITLE : UHMW, HOPPER SLIDE - 71"		
	APPV BY	MATERIAL : UHMW, 1/4" BLACK <del>PLASTIC</del> RECYCLED		
		DO NOT SCALE DRAWING	 AG-BAG INTERNATIONAL PHONE (503) 861-1644	
		REQ. 1	DRAWING NUMBER: 601207 -A	
		NEXT ASSEMBLY:		

D-15-18

140

NO P/W



SEE DWG. 120-16-40000 FOR NEXT ASSEMBLY

REDRAWN AS A 40009 1-23-85

QTY. REQD.	ITEM	PART OR IDENTIFYING NO.	NOMENCLATURE OR DESCRIPTION	UNIT WT.
3	b	-3	5/16" N.C. SERRATED LOCK-NUT	
1	a	-2	5/16" N.C. ALL THREAD x 7 3/8" LEFT HAND	
2-UNIT		-1	ADJUSTER	

UNLESS OTHERWISE SPECIFIED DIMENSIONS ARE IN INCHES. TOLERANCES ARE: FRACTIONS DECIMALS ANGLES ± 1/16 .005 ± .001 ±	APPROVALS	DATE
	DRAWN M.W.M.	4-17-84
MATERIAL	CHECKED	
FINISH ✓ DENOTES MACHINED SURFACE	NOTICE - AG BAG CORPORATION claims proprietary rights in the material disclosed on this drawing. It is issued in confidence for engineering information only and may not be reproduced or used to manufacture anything shown hereon without direct written permission.	SIZE B DRAWING NO. 120-16-40009
DO NOT SCALE DRAWING	SCALE ~	SHEET OF

<b>AG-BAG CORPORATION</b> ASTOR ASTORIA, OREGON	
JR. BAGGER TAIL SHAFT ADJUSTER FOR: CROSS CONVEYOR	
CHANGE	

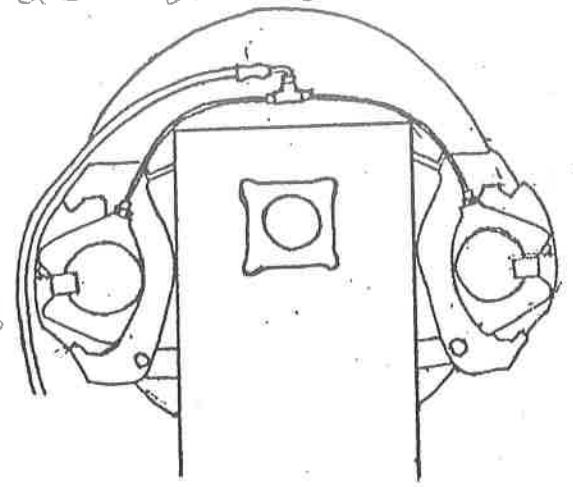


6000 w/ Ford Brake  
To add 2nd Brake

# BRAKE KIT UPDATE

**MOUNT THE RIGHT BRAKE CALIPER THE SAME AS THE LEFT HAND SIDE IS MOUNTED USING THE DIAGRAM**

*Part # 11836  
DBL Brake Kit  
(223 brake)  
Realer 125-23*



\* BOLT THE BOTTOM AND TOP BRACKETS TO THE BRAKE CALIPER USING THE 2 - 1/2" X 1 1/4" BOLTS

\* SLIDE THE CALIPER ONTO THE DRUM, MAKE SURE THE PAD IS EVEN WITH TOP OF DRUM EDGE. LOOK THRU THE SMALL HOLE TO MAKE SURE.

CENTER THE CALIPER ON THE DRUM (SIDE TO SIDE)  
WELD BOTH BRACKETS INTO PLACE

REMOVE BOTH BLEEDER NUTS, PLACE THEM IN THE BOTTOM HOLES

PLACE DOUBLE BRAKE HOSE WITH FITTINGS AS SHOWN, LEAVE THE TIGHTNING NUTS FINGER TIGHT.


PUMP UP THE PRESSURE UNTIL FLUID RUNS OUT THE NUTS AND REMOVES ANY AIR. RETIGHTEN THE NUTS AND FILL UP THE PUMP WITH BRAKE FLUID.

**PARTS LIST:**

- QTY 2) 10410 *42.154003* Adelman Fitting
- 10712 - 1- " 223 FORD BRAKE CALIPER
  - 12" 1/4 425 HOSE
  - 1 1/4" HOSE COUPLING
  - 10634 - 1- 04U-604 HYDRAULIC FITTING
  - 10635 - 1- 04U-664 " "
  - 1- 11715 TEE
  - 2- 11714 1/8" PIPE 6" LONG
  - 11623 - 1- C5205X1 HYDRAULIC FITTING TEE
  - 2- MOUNTING BRACKETS 6"X1 1/4X 1/2" DRILLED
  - 2- 1/2"X1 1/4" BOLTS
  - 2- 1/2" LOCK WASHERS

*6000 w/ Ford Brake*

*ADD 2ND BRAKE*

DRAWN BY:	SCALE: 1	NO. REQ'D.:	TOLERANCES		
			DECIMAL	FRACTIONAL	ANGULAR
DATE:	NEXT ASSY.:	SDS. NO.:	 <b>AG-BAG CORPORATION</b> ASTORIA, OREGON		
		SDD. BY NO.:			

# WHEEL GROUP



REF. NO.	PART NO.	QTY	DESCRIPTION
1	6A	2	Spindle
2	6B	2	Grease Seal
3	6C	2	Inner Bearing Cone
4	6D	2	Inner Bearing Cup
5	6E	2	Hub
6	6F	2	Outer Bearing Cup
7	6G	2	Outer Bearing Cone
8	6H	2	Washer
9	6I	2	Spindle Nut - 5/8" NF Nylok
10	6J	2	Hub Cap
11	6K	2	Wheel
12	6L	2	Tire - 11L15 - 8-Ply Flotation
13	6M	2	Tire Tube - 11L15
14	6N	12	Wheel Bolt

-----  
From: Stashia Sutton  
To: Louann Tucker  
Subject: 6000 for a 50hp tractor  
-----

OJE=====

Louann,  
  
If you want to use a 50hp tractor on a  
G6000 change driven sprocket to a  
120-2B45 which will decrease RPM 13%.

So instead of turning 45RPM it will  
turn at 39RPM.

Let me know if you have any questions.

Stashia

---

AG-BAG - CHANGES

AUGUST 1, 1979

- 1) AIR CHAMBER (BRAKE)
- 2) BRAKE ROTOR SHAFT BEARING 1 3/8
- 3) OUT BOARD BEARING BRACKETS
- 4) CABLE GUIDES
- 5) HOPPER REINFORCEMENT
- 6) 3000# GAUGE
- 7) TUNNEL PIN HOLES
- 8) TUNNEL PIN HOLES
- 9) GEARBOX PUMP BRACKET -(REG.)  
GEARBOX PUMP BRACKET - (HEAVY)  
PLUS CHAIN
- 10) GEARBOX HANDLE
- 11) HALF ROUNDS - 1 1/2 WIDE - 30" LENGTH  
TUNNEL
- 12) GREASE HOSES TO BOTH HOPPER BEARING
- 13) VARIABLE SPEED PULLEY 6" DIA. - 1 3/8 HUB
- 14) NEW STYLE BEATER KNIVES
- 15) DIAGONAL MOTOR BRACES
- 16) NEW STYLE HYDRAULIC TANK
- 17) TONGUE OPPOSITE HYD. MOTOR
- 18) CHECK LID FOR HYDRAULIC TANK
- 19) MOTOR HOOK (ASS'Y OF MOTOR)
- 20) NEW STYLE TONGUE AND STEERING ASS'Y
- 21) TUNNEL DEFLECTOR-PLATE GUSSETS - 3 ADDED
- 22) HARD BEARING 45,000
- 23) Q-803 SPINDLE
- 24) 6 HOLE WHEEL
- 25) SQ. TO ROUND PIN (WENT FROM 1 TO 1 1/8)

AG-BAG  
1979

MOTORS:

STAFFA (ENGLAND) 1003 - 1051  
HYDROSTAR (JAPAN) 1052

HYDRAULIC TANK:

REGULAR - 1003 - 1039  
DOUBLE WELDED - 1040 1048  
WELD IN ANGLE - 1049 - 1051  
11 GAUGE - 1052

ROTOR BEARING:

REGULAR - 1003 - 1018  
5 1/2 WIDE-BLAIR ADD ON - 1019 - 1031  
5 1/2 FOUNDRY - 1032  
5 1/2 FOUNDRY -(HARD) - 1052 - 1053 - 1057

AXLE RIM:

REGULAR (1/4" THICK) - 1003 - 1058  
3/8 THICK - 1059

CABLE DRUMS:

REGULAR (11 GAUGE) - 1003 - 1058  
3/16" THICK - 1059

SPINDLE:

REGULAR - 5 HOLE - 1003 - 1012  
DUALS - 1013 - 1031  
BAG SIDE (6 HOLE) - 1032 - 1058  
6 HOLE BOTH SIDES - 1059

HOPPER REINFORCED - 1049

BEATER KNIVES:

REGULAR -1003 - 1031  
REGULAR (SHORT CUT) - 1032 - 1065  
PYRAMID - 1066

RELIEF VALVE:

PARKER - HANNIEIN 1015



CHAIN USED ON AG-BAG EQUIPMENT

AG-BAG CONVEYOR:

OLD STYLE: #55 CHAIN  
SHORT SIDE 120 LINKS, 17 FLIGHTS  
LONG SIDE 179 LINKS, 25 FLIGHTS

NEW STYLE: #55 CHAIN  
SHORT SIDE 113 LINKS, 16 FLIGHTS  
LONG SIDE 163 LINKS, 23 FLIGHTS

SILOPRESS CONVEYOR:

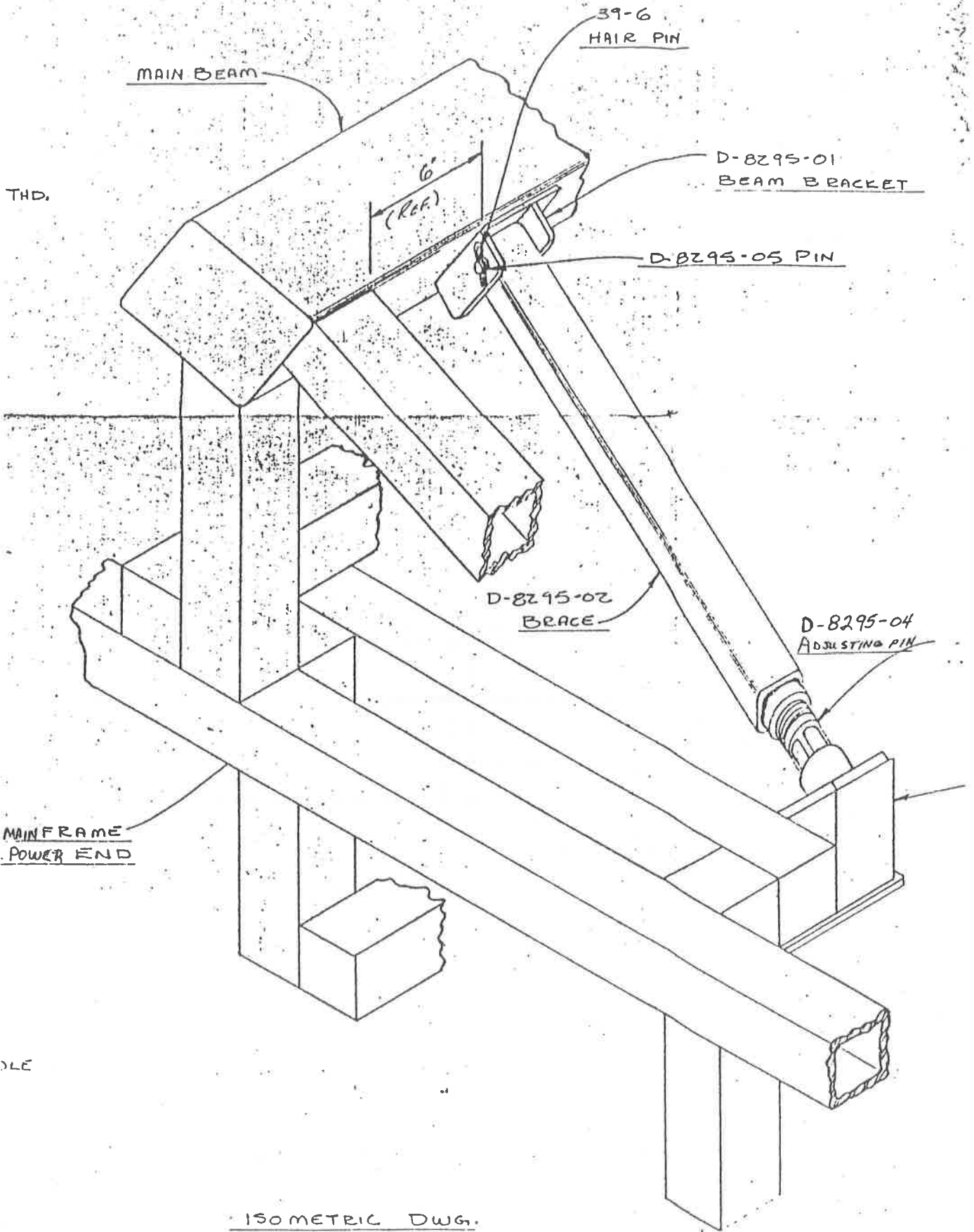
#55 CHAIN  
SHORT SIDE 129 LINKS, 18 FLIGHTS

AG-BAG FEEDTABLE:

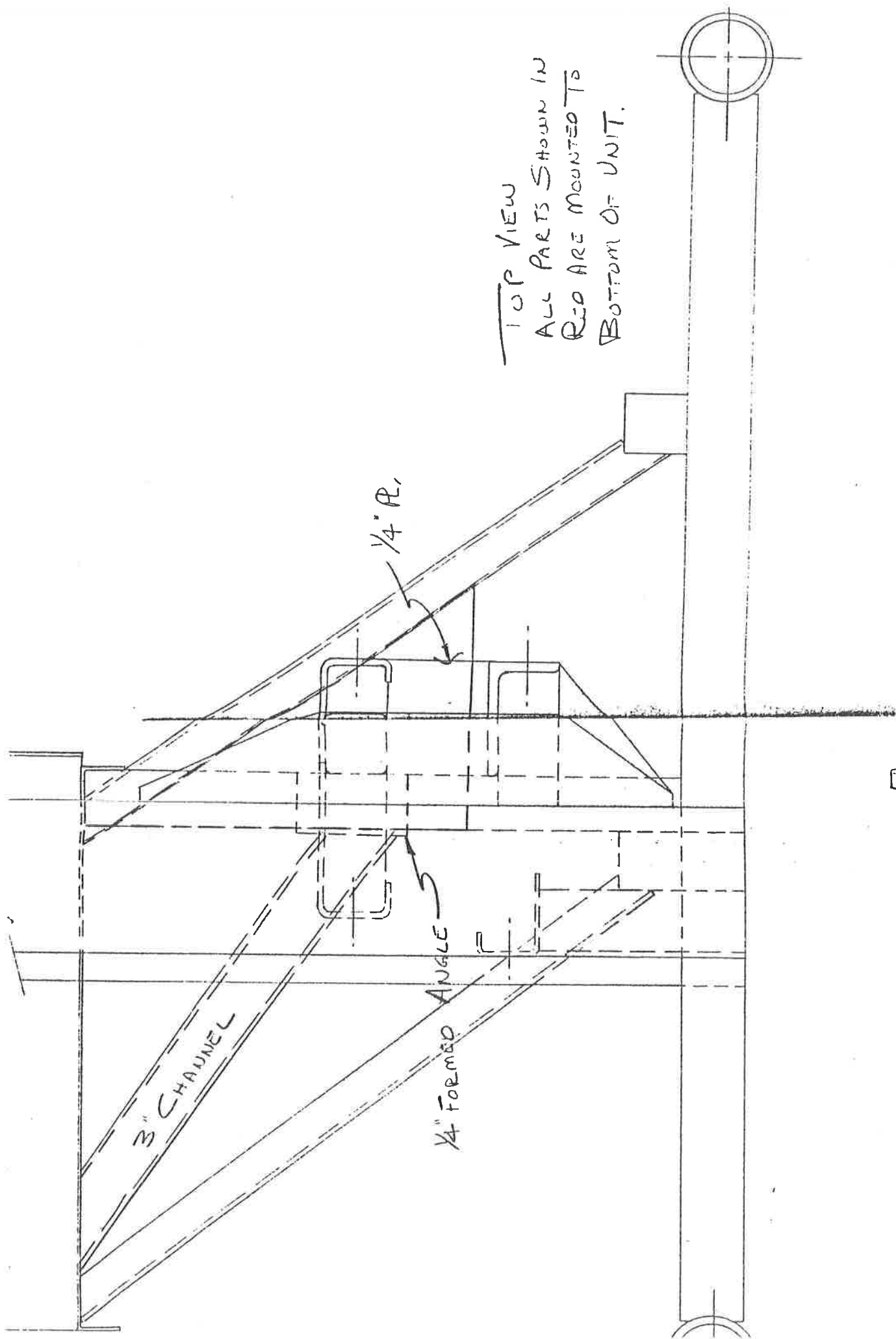
#667X CHAIN  
131 LINKS, 18 FLIGHTS

AG-BAG LIVE BOTTOM:

#667H PINTLE CHAIN  
181 LINKS, 24 FLIGHTS  
(TAKES 2 COMPLETE CHAINS FOR 1 LIVE BOTTOM)



ISOMETRIC DWG.  
NOT TO SCALE  
 TOTAL WT.  $21.04^{\#}$  OF  
 ADJUSTING BRACE



TOP VIEW  
ALL PARTS SHOWN IN  
RED ARE MOUNTED TO  
BOTTOM OF UNIT.

3" CHANNEL

1/4" R.

1/4" FORMED ANGLE

